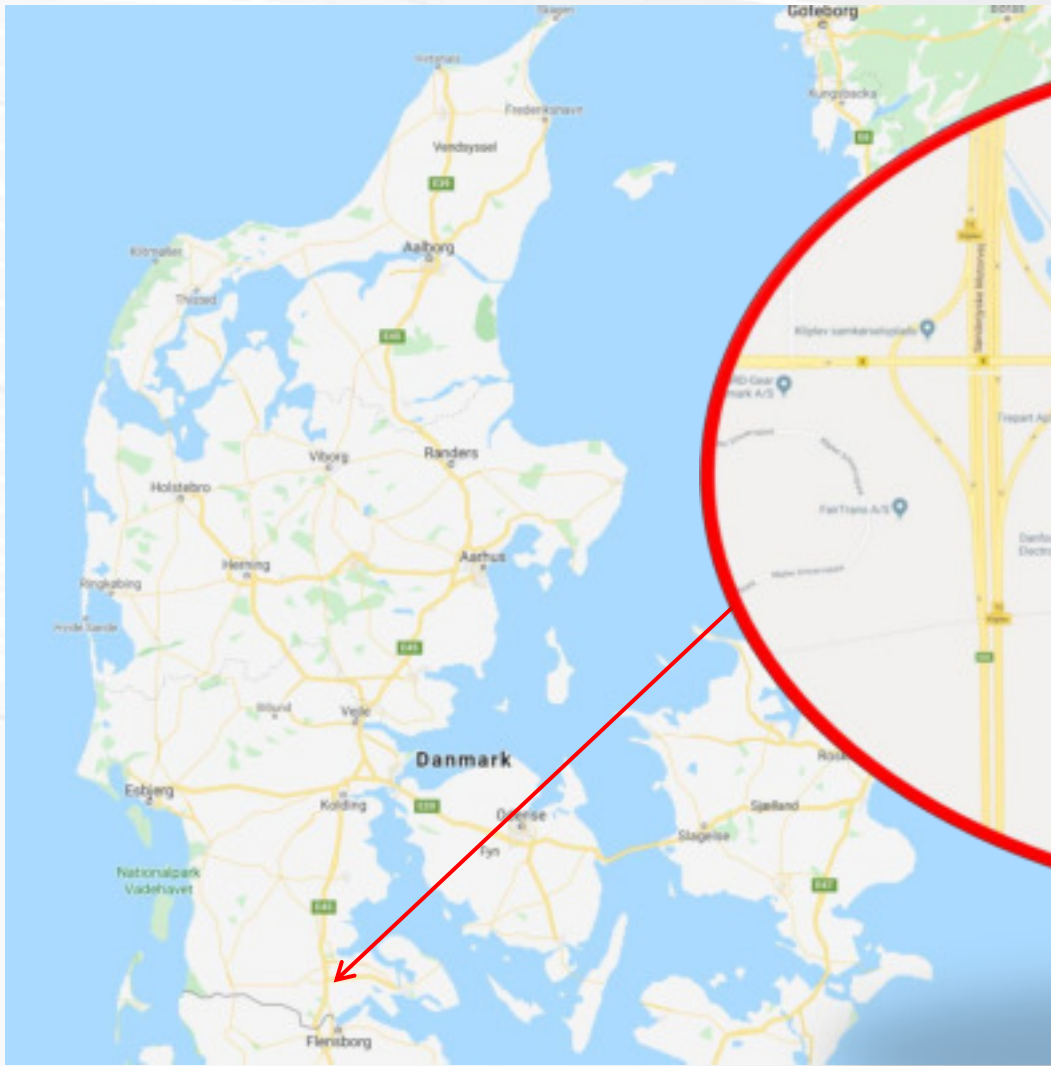


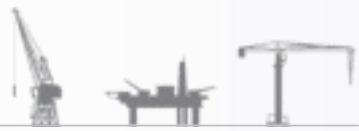


scangineering[®]

A DIVISION OF SCANCAB A/S



Scangineering
Kirkegaardsvej 29, Kliplev
DK-6200 Aabenraa
Tel.: +45 74 68 77 01
Mail: info@scangineering.dk



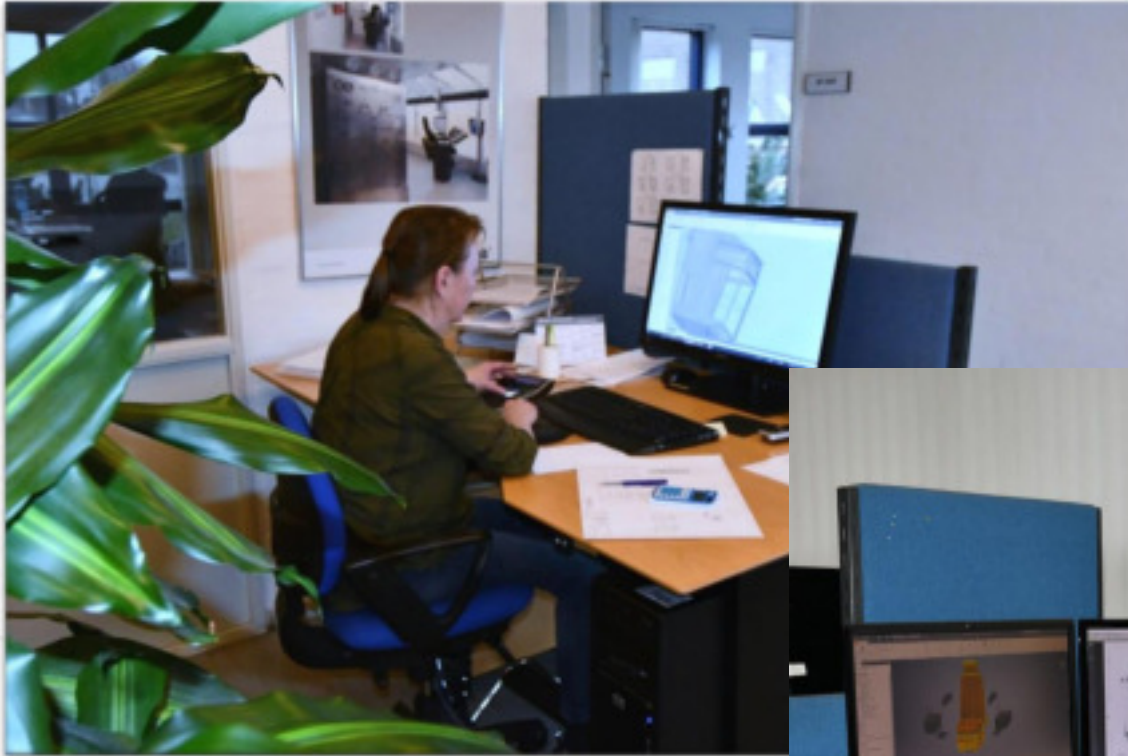


- 6,500 m² Facility
- Project Management
- Engineering
- Production
- Surface treatment
- Mechanical assembly
- Electrical assembly
- QC, test and shipment

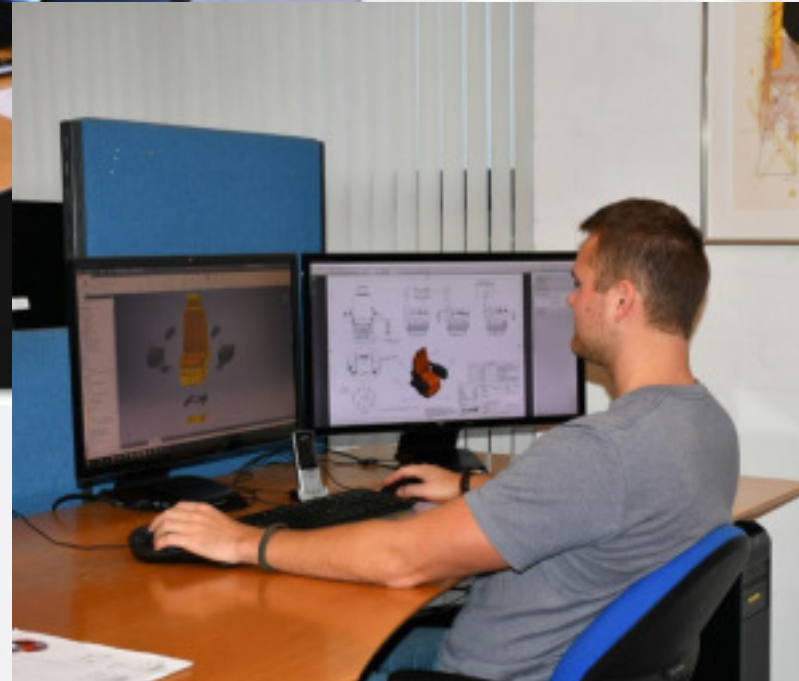


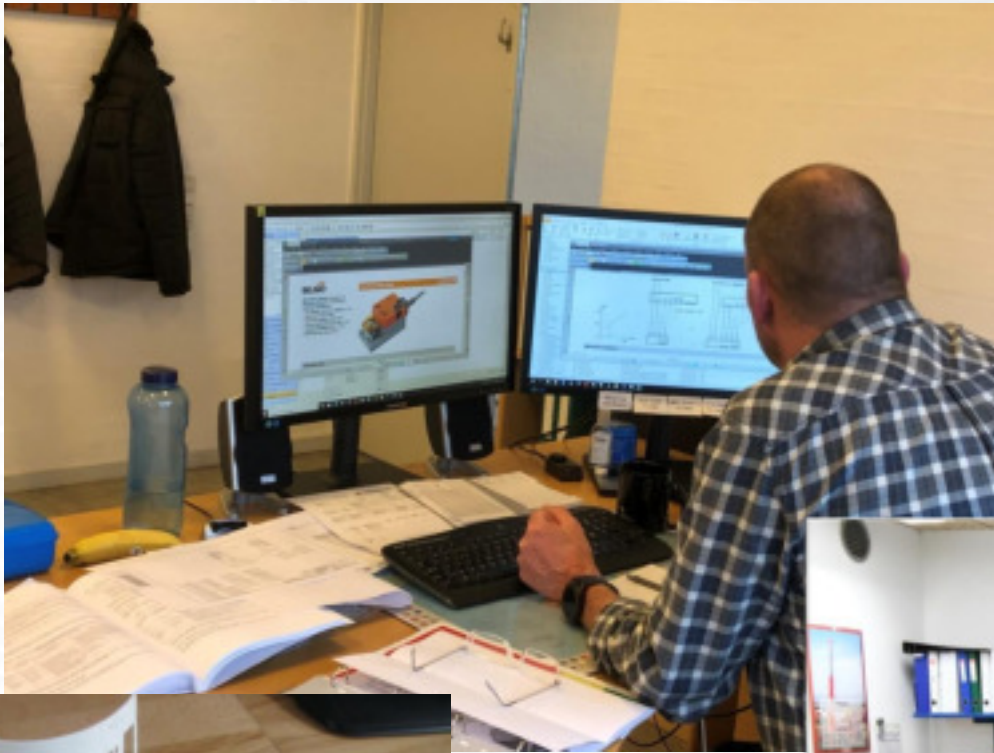
scangineering





- Design and Engineering
- 3D modeling in Autodesk Inventor
- Project Management





- Electrical Engineering
- Cable markings
- TAG signs
- LASER Engraving
 - Stainless Steel
 - TRAFOLYTE





Water jet cutter:

Type: Waterjet NC 4020 D

2 cutting heads

Workpiece size: 4000x2000 mm

Material: Steel – stainless steel – aluminium – brass –
copper – granite - plastic



Safan Plate shears

Cutting length: 4300 mm

Max plate thickness:

Black: 6mm

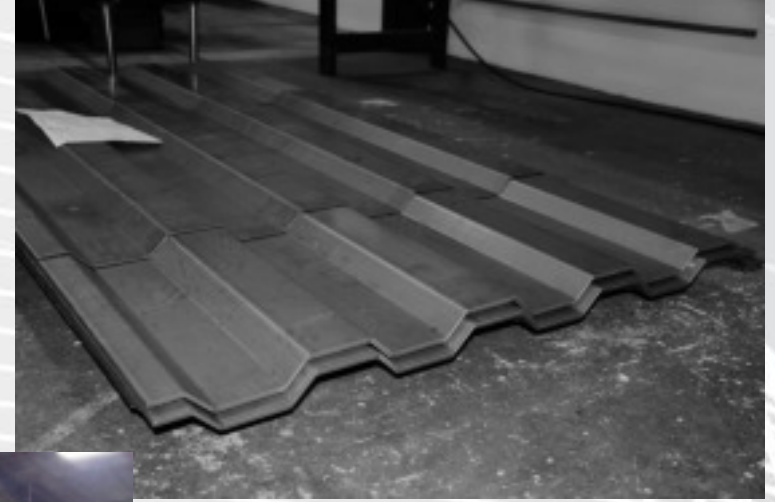
Stainless: 4 mm

Alu: 8 mm

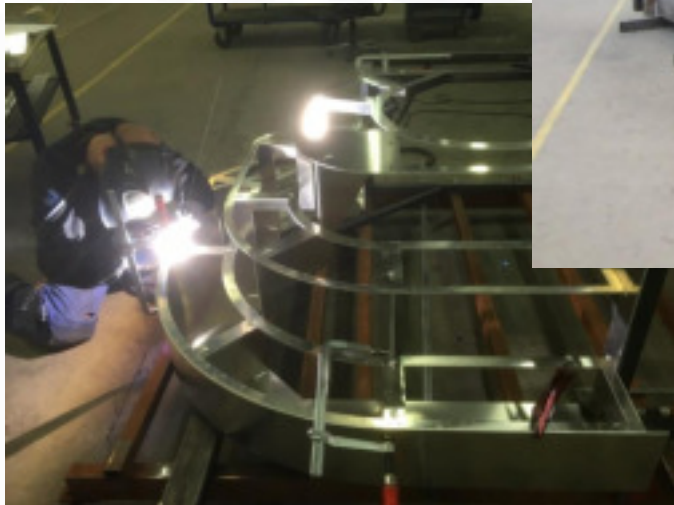




Amada Press brake:
Type: HFT 220 tons,
length 3200 mm



RAS TURBObend Plus (Bending machine)
Length: 3200 mm
Material thickness: 2,5 mm



scengineering



Surface Treatment Facility

- Shotblasting
- Wet Paint
- Maximum dimensions
6,000 x 3,000 x 3,500 mm

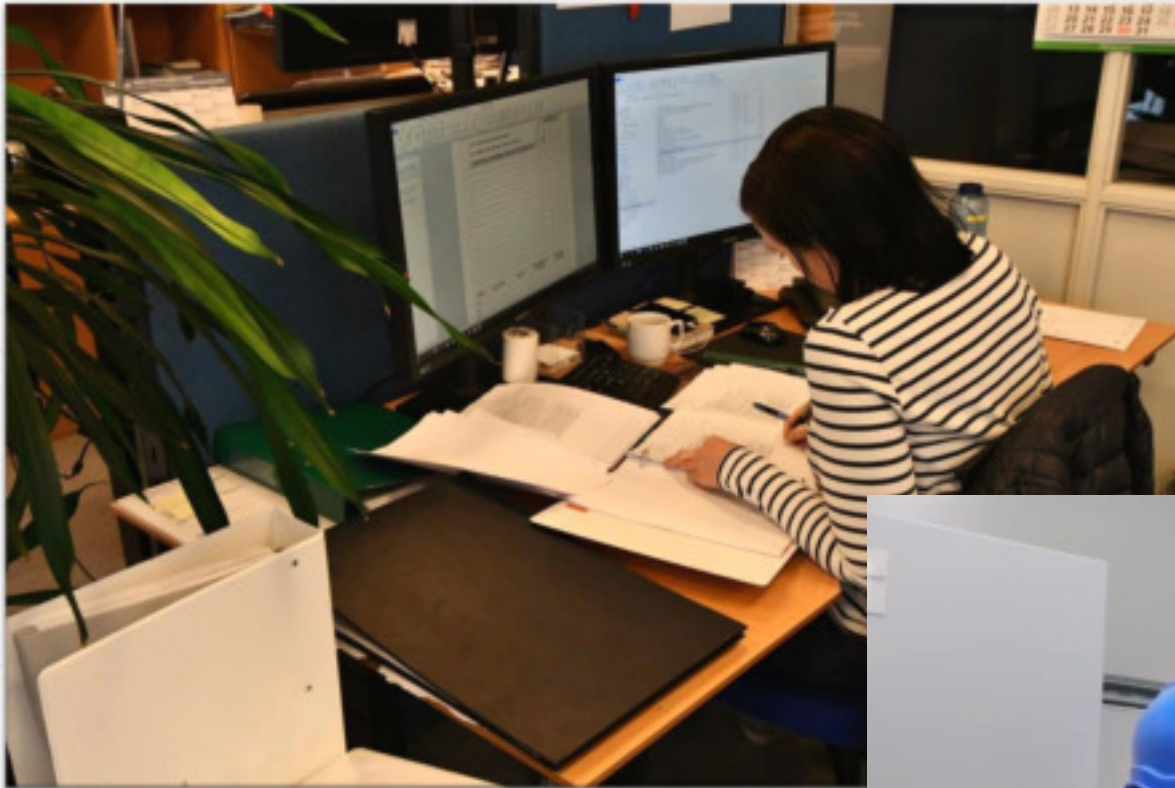






Control Cabinet Workshop





- QC, test and Documentation
Mechanical Completion test
IAT
FAT





scangineering®

A DIVISION OF SCANCAB A/S